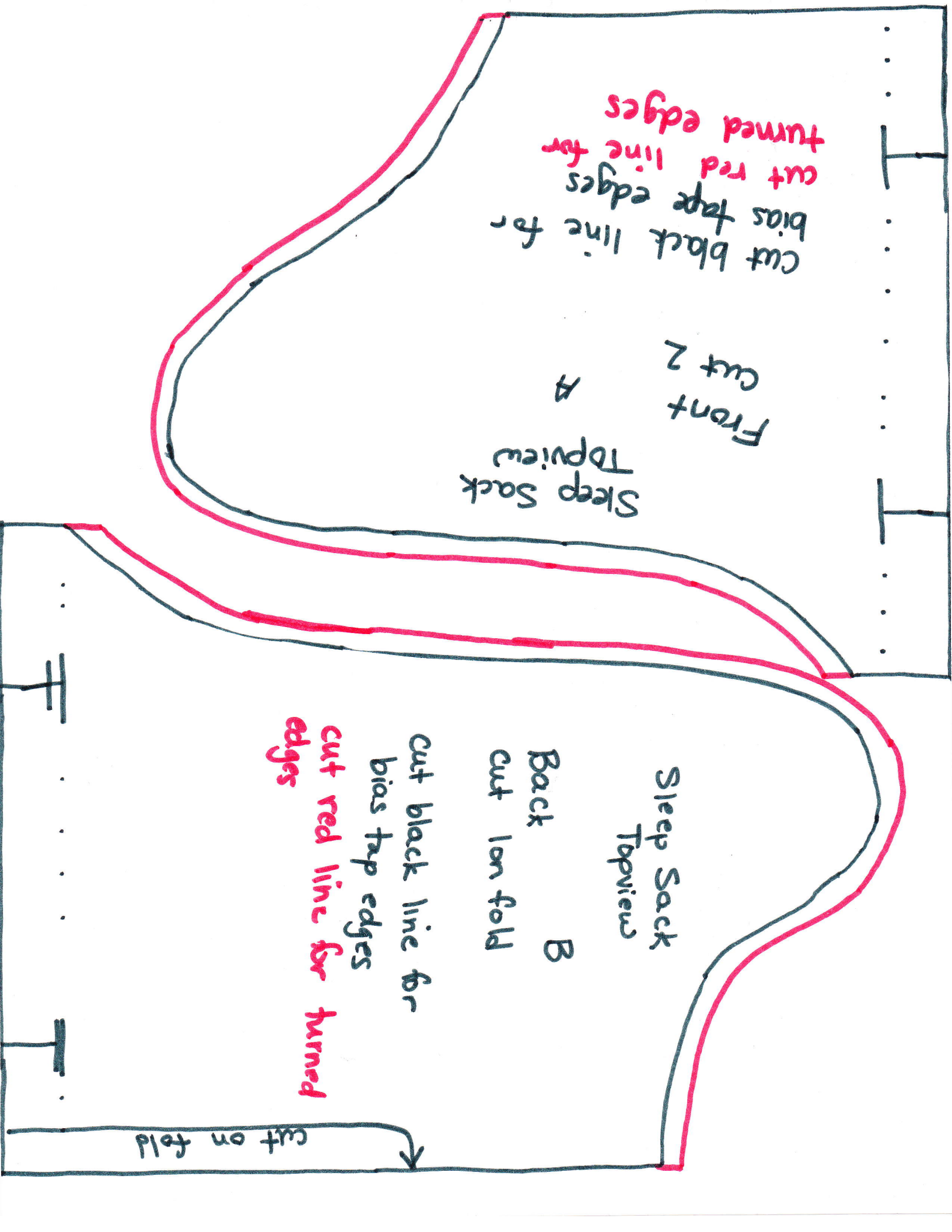


cut black line for
bias tape edges
cut red line for
turned edges

Front
Cut 2
A
Sleep Sack
Topview

Sleep Sack
Topview
B
Back
cut on fold
cut black line for
bias tape edges
cut red line for
turned
edges

cut on fold

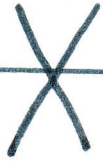




Sleep Sack
Topview

Middle section
front & back

- ① attach to front A and cut 2
- ② attach to Back B and cut 1 on fold



Sleep Sack
Topview

Bottom Section
front & back

- ① attach to middle section & front
cut 2
- ② attach to middle section & back
cut 1 on fold