

# Sewing Mamas

Another free pattern download from  
[www.sewingmamas.com](http://www.sewingmamas.com)

## Casserole Tote

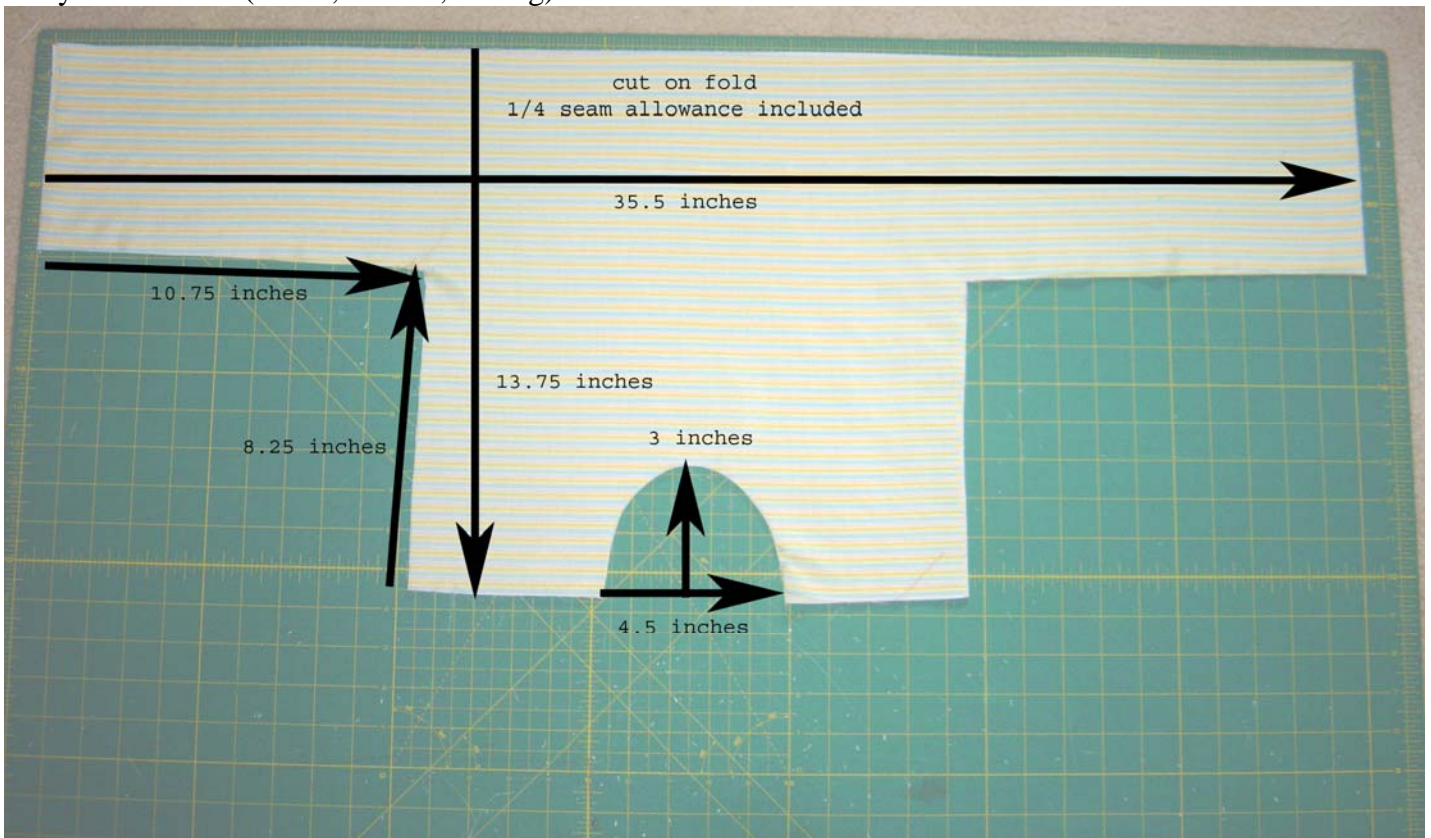
donated by: ZandLsMom

### Materials Needed:

- 1 yd 100% cotton woven/quilter outer fabric
- 1 yd 100% cotton woven/quilter coordinate fabric or muslin
- 1 yd cotton quilt batting
- 2 - ½" dowel rods cut to 12"
- 4" sew on Aplix/Velcro/or 3-4 snaps (you need hook side AND loop side or Male and Female parts of snaps)
- and the obvious things you need for sewing - sewing machine, thread, scissors/rotary cutter, ruler, etc.

### STEP 1

Cut your 3 fabrics (inside, outside, batting) on the fold as shown.

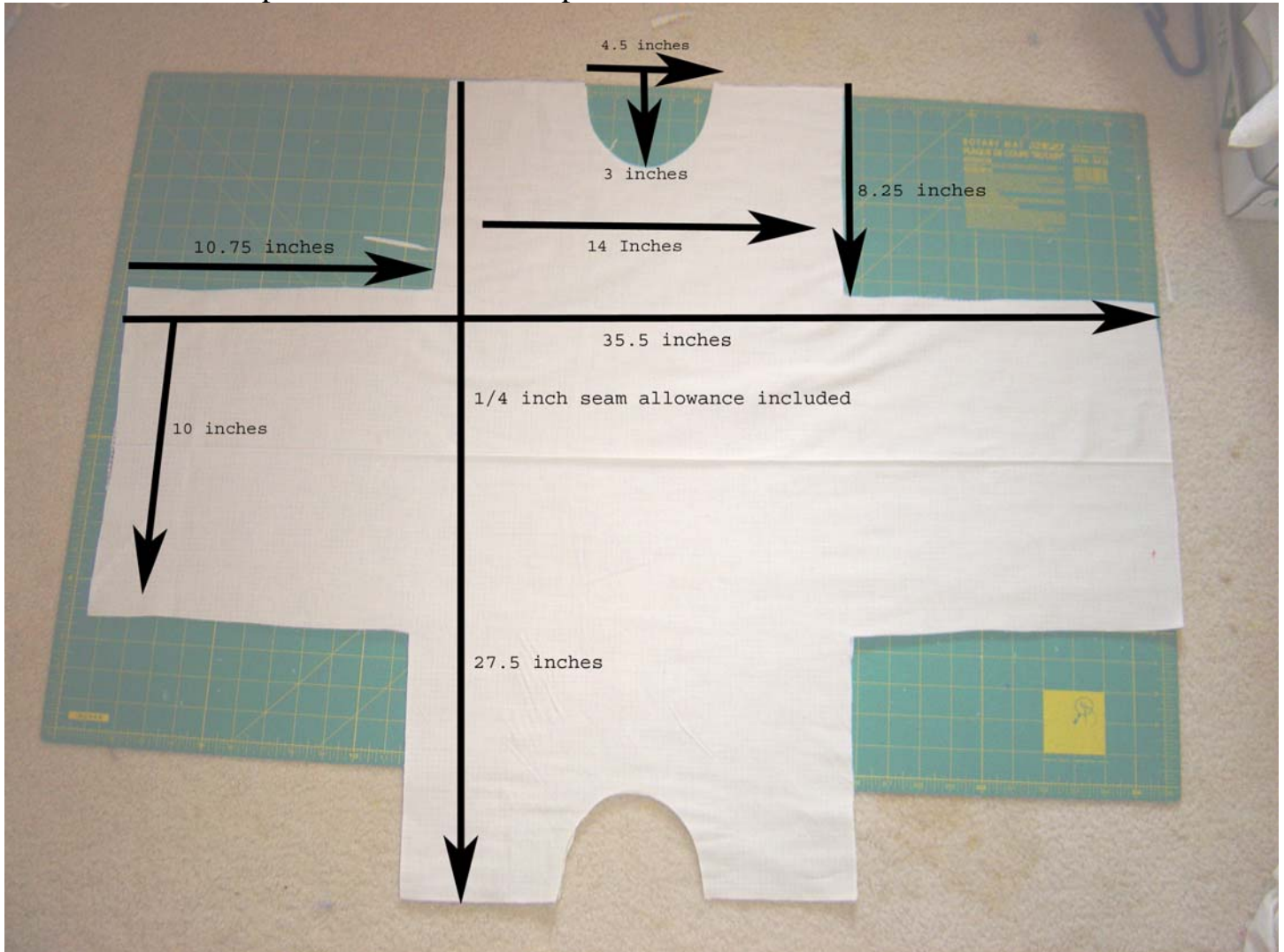


### OPTIONAL STEP (Spoon Pocket):

- Cut piece of fabric (outer or coordinate) 4"x13.5" and 1" piece of each hook and loop (or one set of snaps)
- Fold under fabric to wrong side ¼ inch on 2 long sides and 1 short side.
- Fold remaining short side ½ - ¾ inch and place hook (or male snap) in center.
- Center pocket ½ inch below handle curve and mark where your loop (or female snap) should be placed. Attach loop or snap.

Attach pocket to outside of tote sewing close to edge of pocket.

You should have 3 pieces like this when opened



## STEP 2

Open Fabrics and place batting on wrong side of inner fabric.

Serge inner layer and batting together at handle

Serge outer fabric at handle

Fold over serging to wrong side using serging as seam allowance. Iron/pin/baste\* seam allowance.

\*Instead of stitching this, I used liquid stitches to hold it in place because I didn't want to have to line up my stitching later.



### Step 3

Place outer fabric and inner fabric wrong sides together.

Sew  $\frac{1}{4}$  inch around all straight edges of fabrics. Do not sew handle space. You can reinforce this by serging or zigzag stitching or leave it raw.

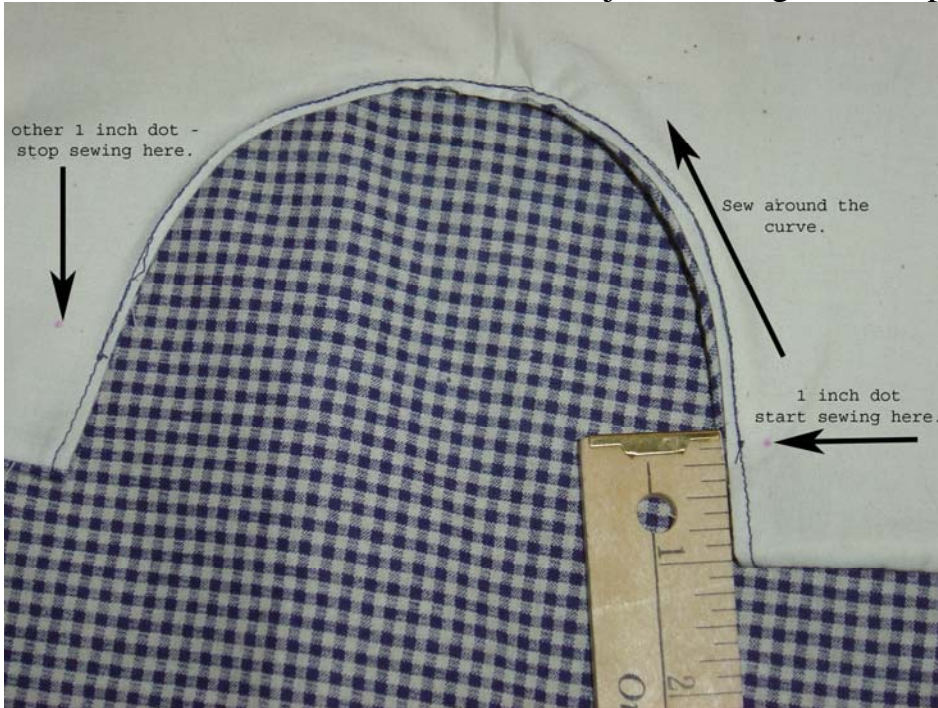
Clip your corners and snip at the inside corners, so you'll have crisp lines when you turn.



## STEP 4: The Handle

Measure  $\frac{3}{4}$  inch from top seam of handle on each side of curve. Sew from mark to mark leaving a space at the top for your dowel.

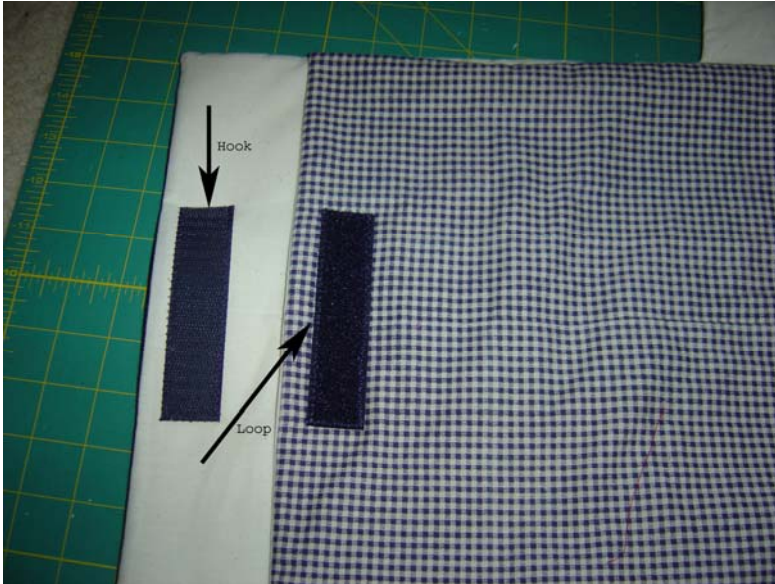
Insert 12" Dowel into handle. It should just slide right in. Repeat on opposite side.



## STEP 5

Sew 4 inches of hook (or male snap part) to **INSIDE** of one flap  $\frac{1}{2}$  from seam.

Sew 4 of loop (or female snap part) to **OUTSIDE** of opposite flap  $\frac{1}{2}$  inch from seam.



Your Casserole Tote is complete.

Consider including a serving spoon tucked inside the (optional) pocket if you give this as a gift.

