

Sewing Mamas

Another free pattern from www.SewingMamas.com
Donated by 'limegreenvw': Accelerando: <http://accelerando-regina.blogspot.com/>

~ Notebook/Pen Organizer~

Here is what you'll be making:



MATERIALS NEEDED:

Osnaburg fabric (found with the muslin in JA's)

Printed Cotton Fabric

Medium weight Fusible Interfacing

1 button--1 inch

14 inches of grosgrain ribbon

5 by 7 notebook

Pen that can be unscrewed on the end (I found mine at Staples)

Optional--fusible web (if you add an appliqué on the inside pocket)

First, you will need to cut....

2 rectangles 10 by 14 inches---1 of osnaburg (outside cover), 1 of printed fabric (inside fabric)

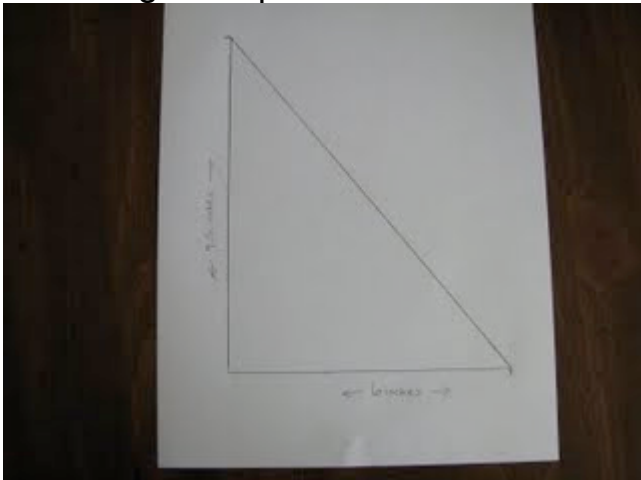
13 by 14 inch piece of osnaburg (this will be the inside pocket)

4 by 10 inches printed fabric (decorative strip on the cover)

2 triangles of printed fabric (see 2nd. picture down for directions)



Here are the dimensions for cutting out the triangle piece. The lower edge is 6 inches. The left side is 7.5 inches. Take a ruler and draw the diagonal line to get the triangle shape needed.



Cut out interfacing pieces

1 triangle piece

1--10 by 14 inch piece (outside cover)

1--6.5 by 14 inch piece (fuse to the inside pocket)

1--5 by 14 inch piece (fuse to top section of the inside printed fabric)

1--4 by 10 inch piece (fuse to the front decorative fabric)



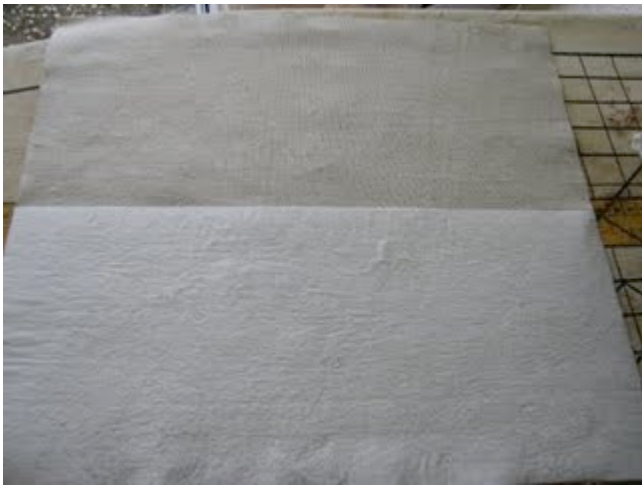
Following directions that come with the interfacing, fuse each piece to the wrong side of the fabric.

I used medium-weight interfacing



INSIDE POCKET DIRECTIONS

Take the piece of osnaburg fabric that you fused the 6.5 by 14 inch interfacing piece on.



Fold the fabric in half....press.



Topstitch along the folded and pressed edge.



Take the 2 triangle pieces, pin right sides together and sew 1/4 inch seam along the edge.



Open up triangle pieces, press, fold wrong sides together. Press again.



Topstitch along the edge of the pressed triangles.



Pin the triangle onto the left side of the long inner pocket piece, matching the raw edges. Baste along both sides.



THIS NEXT STEP IS OPTIONAL.

Take any kind of shape and fuse it on to the right side of the pocket.



Set your sewing machine to a VERY SHORT zig-zag stitch, with a medium width. Here are my settings.



Satin stitch along the outer edge of your shape.



Here is what it looks like when finished.



Next cut a 14 inch length of grosgrain ribbon. Heat seal the ends with a lighter.



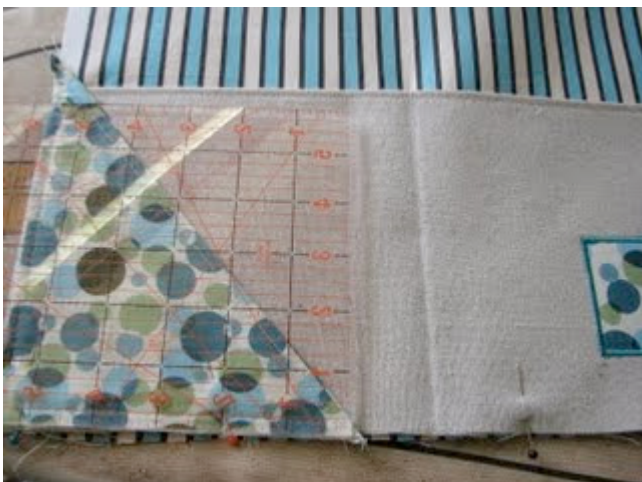
Pin pocket onto the printed inside fabric piece. Make sure the interfaced section of the printed fabric is at the top(not underneath the pocket). Pin the grosgrain ribbon at the top edge of the pocket on the right side as pictured.



Baste along the edges.



Next, mark the stitching lines for your pen section of your carryall. Mark a line 7 inches from the left edge. This will be the center of the carryall. Mark another line 1.25 inches to the left of the center line. Make SURE that the pen you have chosen will fit into this section!! :)



Sew along the stitching lines. Backstitch when you reach the top edge of the pocket.



Now, you've completed the inside section!!!! YEAH!!!



THE OUTER COVER DIRECTIONS

Take the 4 by 10 inch piece of printed fabric along with the 10 by 14 piece of osnaburg.



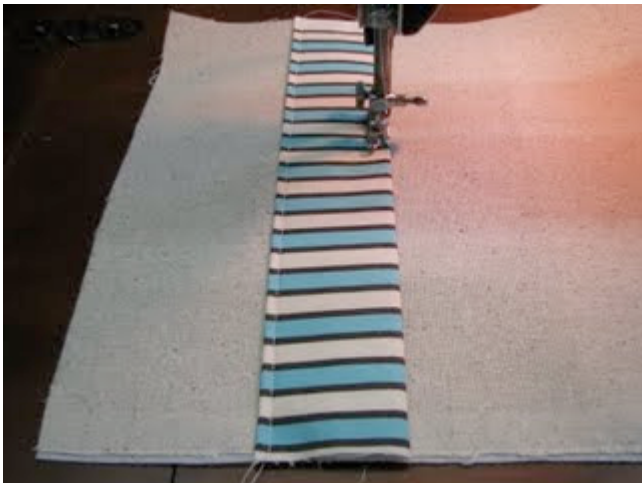
Fold both edges over and press.



You will end up with a 2 inch strip. Measure 2.75 inches from the right edge of the cover and pin the strip into place.



Topstitch along both edges of the strip of fabric. This will be the front cover.



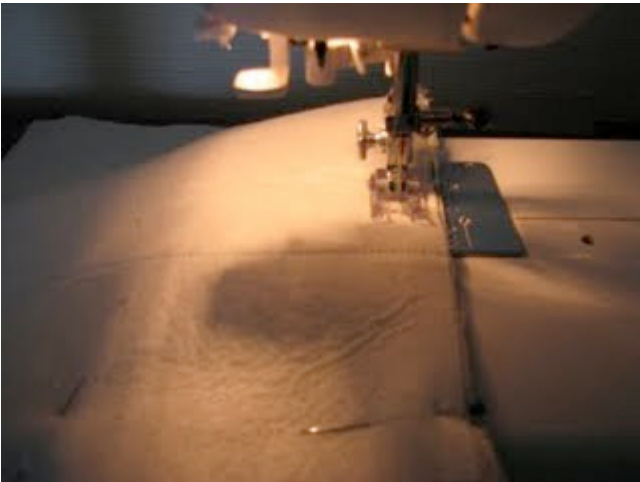
Now you have both sides ready to sew together!!!!



Place the right sides together as pictured below. (Make sure the decorative strip on the front cover is over the triangle pocket on the inside.)



Pin around the edges and sew 1/2 inch seam allowance. Leave a 3 inch opening for turning.



Trim corners. Clip all loose threads.



Turn right side out.



Make sure all 4 corners are turned out. You can use a dull, pointy object to help push them out crisp. Press and pin the opening shut.

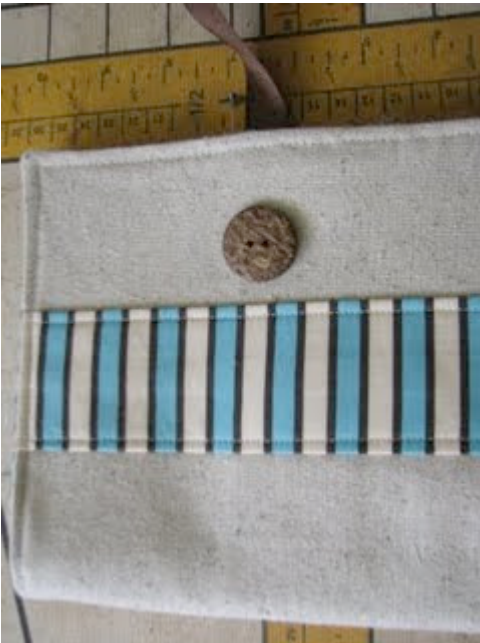


Topstitch around the outside edge of the carryall. Pivot at each corner. That means stop the sewing machine BEFORE you run off the edge of the fabric. Lift the presser foot, rotate the fabric and sew down the next side. :)



SEWING ON THE BUTTON

Line the button up with the grosgrain ribbon and hand sew on the front cover. Make sure you do NOT catch the pocket on the inside when doing the hand sewing. ;)



MAKING THE MATCHING PEN

You will need a pen that you can unscrew the end off. Cut a small rectangle of fabric. Sew right sides together. Turn. Run the ink pen tube through the fabric tube and screw the pen back together.



Sew right sides together.



The fabric tube turned.



Feed the ink tube through the fabric tube.



All finished!!!!!!!!!!!!!! The inside.....



The outside....

